



Pre-Laboratory Questions

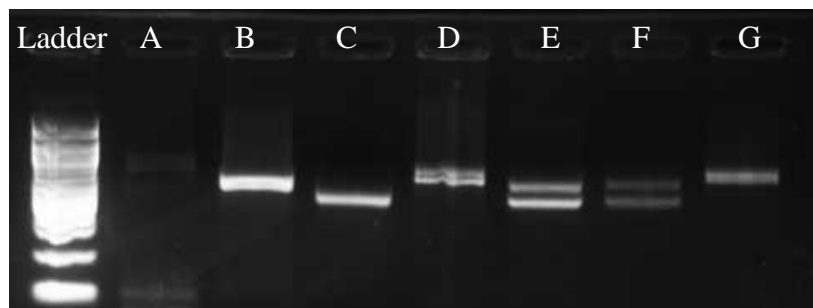
- 1) Specifically explain how gel electrophoresis will allow us to visualize our PCR products.
- 2) How many bands might we expect to see on an agarose gel for the PCR products of D1S80?

Mid-Laboratory Questions

- 1) What was the purpose of adding the 100 base pair ladder?
- 2) What was the purpose of adding the loading dye?

Post-Laboratory Questions

- 1) Use the gel image to answer the following questions. These results display the PCR products for D1S80 amplification for various individuals, A-G.



- a. Which individuals had successful D1S80 amplification?
- b. Individuals E and F appear to have the same number of repeats at each D1S80 locus. Is this necessarily true? Explain.
- c. At first glance, individuals B, C and G seem to show one band, indicating that each individual may have the same number of repeats on their own D1S80 loci. Is this necessarily true (*Hint*: look carefully at the number of bands)?
- d. Discuss the limitations of agarose gel electrophoresis for this type of experiment. What sorts of information can this technique provide?